

# Lower Thames Crossing

## 6.2 Environmental Statement Figures

### Figure 7.19 - Photomontages - Winter Year 1 and Summer Year 15 (2 of 4)

APFP Regulation 5(2)(a)  
Infrastructure Planning  
(Applications: Prescribed Forms and Procedure)  
Regulations 2009  
Volume 6

**DATE:** October 2022

Planning Inspectorate Scheme Ref: TR010032  
Application Document Ref: TR010032/APP/6.2

**VERSION:** 1.0

# Lower Thames Crossing

## Figure 7.19: Photomontages - Winter Year 1 and Summer Year 15 (2 of 4)

### List of contents

Page number

<b>1</b>	<b>Photomontages</b> .....	<b>1</b>
1.1	Introduction .....	1
1.2	Schedule of Representative Viewpoints included in this application document .....	1

# 1 Photomontages

## 1.1 Introduction

1.1.1 For each Representative Viewpoint, the following photography and photomontage views have been provided:

- a. Baseline photography - Winter
- b. Corresponding photomontage – Year 1 (opening year)
- c. Baseline photography – Summer
- d. Corresponding photomontage – Year 15 (design year)

## 1.2 Schedule of Representative Viewpoints included in this application document

1.2.1 Baseline photography and photomontages have been included for the following Representative Viewpoints within this part of Figure 7.19:

### Part Two of Figure 7.19: South of the River Thames

1.2.2 “(CH)” references in Representative Viewpoint numbers denote where a viewpoint has also been prepared to support Chapter 6 Cultural heritage (Application Document 6.1).

- a. S-25 - View from footpath NS167 at the western edge of Thong village
- b. S-28 and S-(CH)01 - View from footpath NS169 adjacent to Gravesend urban edge
- c. S-30 - View from Thong Lane on the eastern urban edge of Gravesend (Riverview Park)
- d. S-31 - View from footpath NG8 located within Southern Valley Golf Club at the urban edge of Gravesend
- e. S-33 - View from intersection of footpaths NG7, NG8 and NG9, on northern edge of Southern Valley Golf Club course
- f. S-38b - View from Saxon Shore Way Long Distance Path/footpath NS138 at intersection with bridleway NS318 adjacent to Shornemead Fort



P01	S8	05/08/2022	First Issued	BB	HP	SK
Rev	Status	Rev. Date	Purpose of revision	Drawn	Chck'd	Apprv'd

For location see Figure 7.16 - Visual Effects Drawing with Representative Viewpoint and Photomontage Locations

Camera: Canon EOS 6D MkII  
 Lens: Canon EF 50mm f/1.8 STM  
 Equipment: Manfrotto MA 454 Micro Positioning Plate  
 Manfrotto SBH-100 Ball Head

**Winter Viewpoint:**  
 Date and Time: S-25  
 06/03/2019 13:15

Visualisation Type: Type 3  
 Projection Type: Cylindrical  
 Enlargement Factor: 1.5  
 Horizontal FOV: 56.5°

FL, Max Aperture: 50mm, 1.75  
 Tripod Height: 1.5m  
 Viewpoint Ground Height: 76.9m AOD  
 Viewpoint Grid Reference: 567062E, 170621N

Distance to Order Limits: 0m  
 View Direction (Centre of View): SW  
 GPS Accuracy: 5m



**LOWER THAMES CROSSING**  
 5th Floor Beaufort House  
 15 St Botolph Street  
 London EC3A 7DT

Project: LOWER THAMES CROSSING  
 Drawing title: Figure 7.19  
 Baseline Photography - Viewpoint S-25  
 Winter Year 1  
 Sheet 1 of 4

Drawn	BB	Date - 05/08/2022	Status	S8	Revision	P01
Checked	HP	Date - 05/08/2022	Application Document No. TR010032/APP/6.2			
Approved	SK	Date - 05/08/2022	Drawing number			
HE540039-CJV-ELS-SZP_ZZ000000_Z-DR-LV-00307A						



P01	S8	05/08/2022	First Issued	BB	HP	SK
Rev	Status	Rev. Date	Purpose of revision	Drawn	Chck'd	Apprv'd

For location see Figure 7.16 - Visual Effects Drawing with Representative Viewpoint and Photomontage Locations

Camera: Canon EOS 6D MkII  
 Lens: Canon EF 50mm f/1.8 STM  
 Equipment: Manfrotto MA 454 Micro Positioning Plate  
 Manfrotto SBH-100 Ball Head

**Winter Viewpoint:**  
 Date and Time: S-25  
 06/03/2019 13:15

Visualisation Type: Type 3  
 Projection Type: Cylindrical  
 Enlargement Factor: 1.5  
 Horizontal FOV: 56.5°

FL, Max Aperture: 50mm, 1.75  
 Tripod Height: 1.5m  
 Viewpoint Ground Height: 76.9m AOD  
 Viewpoint Grid Reference: 567062E, 170621N

Distance to Order Limits: 0m  
 View Direction (Centre of View): SW  
 GPS Accuracy: 5m



**LOWER THAMES CROSSING**  
 5th Floor Beaufort House  
 15 St Botolph Street  
 London EC3A 7DT

Project: LOWER THAMES CROSSING  
 Drawing title: Figure 7.19  
 Photomontage - Viewpoint S-25  
 Winter Year 1  
 Sheet 1 of 4

Drawn	BB	Date - 05/08/2022	Status	Revision
Checked	HP	Date - 05/08/2022	S8	P01
Approved	SK	Date - 05/08/2022	Application Document No. TR010032/APP/6.2	
Drawing number		HE540039-CJV-ELS-SZP_ZZ000000_Z-DR-LV-00307		



Rev	Status	Rev. Date	Purpose of revision	Drawn	Chck'd	Apprv'd
P01	S8	05/08/2022	First Issued	BB	HP	SK

For location see Figure 7.16 - Visual Effects Drawing with Representative Viewpoint and Photomontage Locations

Camera: Canon EOS 6D MkII  
 Lens: Canon EF 50mm f/1.8 STM  
 Equipment: Manfrotto MA 454 Micro Positioning Plate  
 Manfrotto SBH-100 Ball Head

**Winter Viewpoint:**  
 Date and Time: S-25  
 06/03/2019 13:15

Visualisation Type: Type 3  
 Projection Type: Cylindrical  
 Enlargement Factor: 1.5  
 Horizontal FOV: 56.5°

FL, Max Aperture: 50mm, 1.75  
 Tripod Height: 1.5m  
 Viewpoint Ground Height: 76.9m AOD  
 Viewpoint Grid Reference: 567062E, 170621N

Distance to Order Limits: 0m  
 View Direction (Centre of View): SW  
 GPS Accuracy: 5m



**Client**

**LOWER THAMES CROSSING**  
 5th Floor Beaufort House  
 15 St Botolph Street  
 London EC3A 7DT

**Project**

**LOWER THAMES CROSSING**  
 Drawing title: Figure 7.19  
 Baseline Photography - Viewpoint S-25  
 Winter Year 1  
 Sheet 2 of 4

Drawn	BB	Date - 05/08/2022	Status	Revision
Checked	HP	Date - 05/08/2022	S8	P01
Approved	SK	Date - 05/08/2022	Application Document No. TR010032/APP/6.2	
Drawing number HE540039-CJV-ELS-SZP_ZZ000000_Z-DR-LV-00308A				



For location see Figure 7.16 - Visual Effects Drawing with Representative Viewpoint and Photomontage Locations

**Winter Viewpoint:**  
Date and Time: S-25  
06/03/2019 13:15

Camera: Canon EOS 6D MkII  
Lens: Canon EF 50mm f/1.8 STM  
Equipment: Manfrotto MA 454 Micro Positioning Plate  
Manfrotto SBH-100 Ball Head

Visualisation Type: Type 3  
Projection Type: Cylindrical  
Enlargement Factor: 1.5  
Horizontal FOV: 56.5°

FL, Max Aperture: 50mm, 1.75  
Tripod Height: 1.5m  
Viewpoint Ground Height: 76.9m AOD  
Viewpoint Grid Reference: 567062E, 170621N

Distance to Order Limits: 0m  
View Direction (Centre of View): SW  
GPS Accuracy: 5m



**LOWER THAMES CROSSING**  
5th Floor Beaufort House  
15 St Botolph Street  
London EC3A 7DT

Project: LOWER THAMES CROSSING  
Drawing title: Figure 7.19  
Photomontage - Viewpoint S-25  
Winter Year 1  
Sheet 2 of 4

Drawn	BB	Date - 05/08/2022	Status	Revision
Checked	HP	Date - 05/08/2022	S8	P01
Approved	SK	Date - 05/08/2022	Application Document No. TR010032/APP/6.2	
Drawing number HE540039-CJV-ELS-SZP_ZZ000000_Z-DR-LV-00308				

P01	S8	05/08/2022	First Issued	BB	HP	SK
Rev	Status	Rev. Date	Purpose of revision	Drawn	Chck'd	Apprv'd



For location see Figure 7.16 - Visual Effects Drawing with Representative Viewpoint and Photomontage Locations

<b>Summer Viewpoint:</b>	S-25	<b>FL, Max Aperture:</b>	50mm, 1.75	<b>Distance to Order Limits:</b>	0m
<b>Date and Time:</b>	29/05/2019 10:29	<b>Tripod Height:</b>	1.5m	<b>View Direction</b>	SW
<b>Visualisation Type:</b>	Type 3	<b>Viewpoint Ground Height:</b>	76.9m AOD	<b>(Centre of View):</b>	
<b>Projection Type:</b>	Cylindrical	<b>Viewpoint Grid Reference:</b>	567062E, 170621N	<b>GPS Accuracy:</b>	5m
<b>Enlargement Factor:</b>	1.5				
<b>Horizontal FOV:</b>	56.5°				

<b>Camera:</b>	Canon EOS 6D MkII
<b>Lens:</b>	Canon EF 50mm f/1.8 STM
<b>Equipment:</b>	Manfrotto MA 454 Micro Positioning Plate Manfrotto SBH-100 Ball Head



**LOWER THAMES CROSSING**  
5th Floor Beaufort House  
15 St Botolph Street  
London EC3A 7DT

**Project** LOWER THAMES CROSSING  
**Drawing title** Figure 7.19  
Baseline Photography - Viewpoint S-25  
Summer Year 15  
Sheet 3 of 4

<b>Drawn</b>	BB	<b>Date</b>	- 05/08/2022	<b>Status</b>	S8	<b>Revision</b>	P01
<b>Checked</b>	HP	<b>Date</b>	- 05/08/2022				
<b>Approved</b>	SK	<b>Date</b>	- 05/08/2022				
<b>Drawing number</b>				HE540039-CJV-ELS-SZP_ZZ000000_Z-DR-LV-00309A			
				Application Document No. TR010032/APP/6.2			





P01	S8	05/08/2022	First Issued	BB	HP	SK
Rev	Status	Rev. Date	Purpose of revision	Drawn	Chck'd	Apprv'd

For location see Figure 7.16 - Visual Effects Drawing with Representative Viewpoint and Photomontage Locations		<b>Summer Viewpoint:</b>		S-25		29/05/2019 10:29	
Camera:	Canon EOS 6D MkII	Visualisation Type:	Type 3	FL, Max Aperture:	50mm, 1.75	Distance to Order Limits:	0m
Lens:	Canon EF 50mm f/1.8 STM	Projection Type:	Cylindrical	Tripod Height:	1.5m	View Direction	(Centre of View): SW
Equipment:	Manfrotto MA 454 Micro Positioning Plate	Enlargement Factor:	1.5	Viewpoint Ground Height:	76.9m AOD	Viewpoint Grid Reference:	567062E, 170621N
	Manfrotto SBH-100 Ball Head	Horizontal FOV:	56.5°	Viewpoint Grid Reference:	567062E, 170621N	GPS Accuracy:	5m



**LOWER THAMES CROSSING**  
 5th Floor Beaufort House  
 15 St Botolph Street  
 London EC3A 7DT

Project	LOWER THAMES CROSSING
Drawing title	Figure 7.19 Photomontage - Viewpoint S-25 Summer Year 15 Sheet 3 of 4

Drawn	BB	Date - 05/08/2022	Status	S8	Revision	P01
Checked	HP	Date - 05/08/2022	Application Document No. TR010032/APP/6.2			
Approved	SK	Date - 05/08/2022	Drawing number			
HE540039-CJV-ELS-SZP_ZZ000000_Z-DR-LV-00309						



P01	S8	05/08/2022	First Issued	BB	HP	SK
Rev	Status	Rev. Date	Purpose of revision	Drawn	Chck'd	Apprv'd

For location see Figure 7.16 - Visual Effects Drawing with Representative Viewpoint and Photomontage Locations

Camera: Canon EOS 6D MkII  
 Lens: Canon EF 50mm f/1.8 STM  
 Equipment: Manfrotto MA 454 Micro Positioning Plate  
 Manfrotto SBH-100 Ball Head

**Summer Viewpoint:** S-25  
 Date and Time: 29/05/2019 10:29

Visualisation Type: Type 3  
 Projection Type: Cylindrical  
 Enlargement Factor: 1.5  
 Horizontal FOV: 56.5°

FL, Max Aperture: 50mm, 1.75  
 Tripod Height: 1.5m  
 Viewpoint Ground Height: 76.9m AOD  
 Viewpoint Grid Reference: 567062E, 170621N

Distance to Order Limits: 0m  
 View Direction (Centre of View): SW  
 GPS Accuracy: 5m



**LOWER THAMES CROSSING**  
 5th Floor Beaufort House  
 15 St Botolph Street  
 London EC3A 7DT

Project: LOWER THAMES CROSSING  
 Drawing title: Figure 7.19  
 Baseline Photography - Viewpoint S-25  
 Summer Year 15  
 Sheet 4 of 4

Drawn	BB	Date - 05/08/2022	Status	S8	Revision	P01
Checked	HP	Date - 05/08/2022	Application Document No. TR010032/APP/6.2			
Approved	SK	Date - 05/08/2022	Drawing number			
HE540039-CJV-ELS-SZP_ZZ000000_Z-DR-LV-00310A						



For location see Figure 7.16 - Visual Effects Drawing with Representative Viewpoint and Photomontage Locations

**Summer Viewpoint:** S-25  
Date and Time: 29/05/2019 10:29

Camera: Canon EOS 6D MkII  
Lens: Canon EF 50mm f/1.8 STM  
Equipment: Manfrotto MA 454 Micro Positioning Plate  
Manfrotto SBH-100 Ball Head

Visualisation Type: Type 3  
Projection Type: Cylindrical  
Enlargement Factor: 1.5  
Horizontal FOV: 56.5°

FL, Max Aperture: 50mm, 1.75  
Tripod Height: 1.5m  
Viewpoint Ground Height: 76.9m AOD  
Viewpoint Grid Reference: 567062E, 170621N

Distance to Order Limits: 0m  
View Direction (Centre of View): SW  
GPS Accuracy: 5m



**LOWER THAMES CROSSING**  
5th Floor Beaufort House  
15 St Botolph Street  
London EC3A 7DT

Project: LOWER THAMES CROSSING  
Drawing title: Figure 7.19  
Photomontage - Viewpoint S-25  
Summer Year 15  
Sheet 4 of 4

Drawn	BB	Date - 05/08/2022	Status	Revision
Checked	HP	Date - 05/08/2022	S8	P01
Approved	SK	Date - 05/08/2022	Application Document No. TR010032/APP/6.2	
Drawing number		HE540039-CJV-ELS-SZP_ZZ000000_Z-DR-LV-00310		

Rev	Status	Rev. Date	Purpose of revision	Drawn	Chck'd	Apprv'd
P01	S8	05/08/2022	First Issued	BB	HP	SK



P01	S8	05/08/2022	First Issued	BB	HP	SK
Rev	Status	Rev. Date	Purpose of revision	Drawn	Chck'd	Apprv'd

For location see Figure 7.16 - Visual Effects Drawing with Representative Viewpoint and Photomontage Locations

Camera: Canon EOS 6D MkII  
 Lens: Canon EF 50mm f/1.8 STM  
 Equipment: Manfrotto MA 454 Micro Positioning Plate  
 Manfrotto SBH-100 Ball Head

**Winter Viewpoint:**  
 Date and Time: S-28  
 06/03/2019 14:23

Visualisation Type: Type 3  
 Projection Type: Cylindrical  
 Enlargement Factor: 1.5  
 Horizontal FOV: 56.5°

FL, Max Aperture: 50mm, 1.75  
 Tripod Height: 1.5m  
 Viewpoint Ground Height: 56.4m AOD  
 Viewpoint Grid Reference: 566540E, 171019N

Distance to Order Limits: 0m  
 View Direction (Centre of View): ESE  
 GPS Accuracy: 5m



**LOWER THAMES CROSSING**  
 5th Floor Beaufort House  
 15 St Botolph Street  
 London EC3A 7DT

Project: LOWER THAMES CROSSING  
 Drawing title: Figure 7.19  
 Baseline Photography - Viewpoint S-28  
 Winter Year 1  
 Sheet 1 of 4

Drawn	BB	Date - 05/08/2022	Status	S8	Revision	P01
Checked	HP	Date - 05/08/2022	Application Document No. TR010032/APP/6.2			
Approved	SK	Date - 05/08/2022	Drawing number			
HE540039-CJV-ELS-SZP_ZZ000000_Z-DR-LV-00311A						



For location see Figure 7.16 - Visual Effects Drawing with Representative Viewpoint and Photomontage Locations

**Winter Viewpoint:** S-28  
Date and Time: 06/03/2019 14:23

Camera: Canon EOS 6D MkII  
Lens: Canon EF 50mm f/1.8 STM  
Equipment: Manfrotto MA 454 Micro Positioning Plate  
Manfrotto SBH-100 Ball Head

Visualisation Type: Type 3  
Projection Type: Cylindrical  
Enlargement Factor: 1.5  
Horizontal FOV: 56.5°

FL, Max Aperture: 50mm, 1.75  
Tripod Height: 1.5m  
Viewpoint Ground Height: 56.4m AOD  
Viewpoint Grid Reference: 566540E, 171019N

Distance to Order Limits: 0m  
View Direction (Centre of View): ESE  
GPS Accuracy: 5m



**LOWER THAMES CROSSING**  
5th Floor Beaufort House  
15 St Botolph Street  
London EC3A 7DT

Project: LOWER THAMES CROSSING  
Drawing title: Figure 7.19  
Photomontage - Viewpoint S-28  
Winter Year 1  
Sheet 1 of 4

Drawn	BB	Date - 05/08/2022	Status	Revision
Checked	HP	Date - 05/08/2022	S8	P01
Approved	SK	Date - 05/08/2022	Application Document No. TR010032/APP/6.2	
Drawing number				
HE540039-CJV-ELS-SZP_ZZ000000_Z-DR-LV-00311				

P01	S8	05/08/2022	First Issued	BB	HP	SK
Rev	Status	Rev. Date	Purpose of revision	Drawn	Chck'd	Apprv'd



Rev	Status	Rev. Date	Purpose of revision	Drawn	Chck'd	Apprv'd
P01	S8	05/08/2022	First Issued	BB	HP	SK

For location see Figure 7.16 - Visual Effects Drawing with Representative Viewpoint and Photomontage Locations

Camera: Canon EOS 6D MkII  
 Lens: Canon EF 50mm f/1.8 STM  
 Equipment: Manfrotto MA 454 Micro Positioning Plate  
 Manfrotto SBH-100 Ball Head

**Winter Viewpoint:**  
 Date and Time: S-28  
 06/03/2019 14:23

Visualisation Type: Type 3  
 Projection Type: Cylindrical  
 Enlargement Factor: 1.5  
 Horizontal FOV: 56.5°

FL, Max Aperture: 50mm, 1.75  
 Tripod Height: 1.5m  
 Viewpoint Ground Height: 56.4m AOD  
 Viewpoint Grid Reference: 566540E, 171019N

Distance to Order Limits: 0m  
 View Direction (Centre of View): ESE  
 GPS Accuracy: 5m



**Client**

**LOWER THAMES CROSSING**  
 5th Floor Beaufort House  
 15 St Botolph Street  
 London EC3A 7DT

**Project**

LOWER THAMES CROSSING

**Drawing title**

Figure 7.19  
 Baseline Photography - Viewpoint S-28  
 Winter Year 1  
 Sheet 2 of 4

Drawn	BB	Date - 05/08/2022	Status	Revision
Checked	HP	Date - 05/08/2022	S8	P01
Approved	SK	Date - 05/08/2022	Application Document No. TR010032/APP/6.2	
Drawing number				
HE540039-CJV-ELS-SZP_ZZ000000_Z-DR-LV-00312A				



P01	S8	05/08/2022	First Issued	BB	HP	SK
Rev	Status	Rev. Date	Purpose of revision	Drawn	Chck'd	Apprv'd

For location see Figure 7.16 - Visual Effects Drawing with Representative Viewpoint and Photomontage Locations

Camera: Canon EOS 6D MkII  
 Lens: Canon EF 50mm f/1.8 STM  
 Equipment: Manfrotto MA 454 Micro Positioning Plate  
 Manfrotto SBH-100 Ball Head

**Winter Viewpoint:**  
 Date and Time: S-28  
 06/03/2019 14:23

Visualisation Type: Type 3  
 Projection Type: Cylindrical  
 Enlargement Factor: 1.5  
 Horizontal FOV: 56.5°

FL, Max Aperture: 50mm, 1.75  
 Tripod Height: 1.5m  
 Viewpoint Ground Height: 56.4m AOD  
 Viewpoint Grid Reference: 566540E, 171019N

Distance to Order Limits: 0m  
 View Direction (Centre of View): ESE  
 GPS Accuracy: 5m



**LOWER THAMES CROSSING**  
 5th Floor Beaufort House  
 15 St Botolph Street  
 London EC3A 7DT

Project: LOWER THAMES CROSSING  
 Drawing title: Figure 7.19  
 Photomontage - Viewpoint S-28  
 Winter Year 1  
 Sheet 2 of 4

Drawn	BB	Date - 05/08/2022	Status	Revision
Checked	HP	Date - 05/08/2022	S8	P01
Approved	SK	Date - 05/08/2022	Application Document No. TR010032/APP/6.2	
Drawing number HE540039-CJV-ELS-SZP_ZZ000000_Z-DR-LV-00312				



Rev	Status	Rev. Date	Purpose of revision	Drawn	Chck'd	Apprv'd
P01	S8	05/08/2022	First Issued	BB	HP	SK

For location see Figure 7.16 - Visual Effects Drawing with Representative Viewpoint and Photomontage Locations		<b>Summer Viewpoint:</b> Date and Time: S-28 29/05/2019 09:11	Camera: Canon EOS 6D MkII Lens: Canon EF 50mm f/1.8 STM Equipment: Manfrotto MA 454 Micro Positioning Plate Manfrotto SBH-100 Ball Head	Visualisation Type: Type 3 Projection Type: Cylindrical Enlargement Factor: 1.5 Horizontal FOV: 56.5°	FL, Max Aperture: 50mm, 1.75 Tripod Height: 1.5m Viewpoint Ground Height: 56.4m AOD Viewpoint Grid Reference: 566540E, 171019N	Distance to Order Limits: 0m View Direction (Centre of View): ESE GPS Accuracy: 5m
--	--	---	--	--	---	--



**LOWER THAMES CROSSING**  
 5th Floor Beaufort House  
 15 St Botolph Street  
 London EC3A 7DT

Project	LOWER THAMES CROSSING
Drawing title	Figure 7.19 Baseline Photography - Viewpoint S-28 Summer Year 15 Sheet 3 of 4

Drawn	BB	Date	05/08/2022	Status	S8	Revision	P01
Checked	HP	Date	05/08/2022	Application Document No. TR010032/APP/6.2			
Approved	SK	Date	05/08/2022	Drawing number			
HE540039-CJV-ELS-SZP_ZZ000000_Z-DR-LV-00313A							





For location see Figure 7.16 - Visual Effects Drawing with Representative Viewpoint and Photomontage Locations

**Summer Viewpoint:**  
Date and Time: S-28  
29/05/2019 09:11

Camera: Canon EOS 6D MkII  
Lens: Canon EF 50mm f/1.8 STM  
Equipment: Manfrotto MA 454 Micro Positioning Plate  
Manfrotto SBH-100 Ball Head

Visualisation Type: Type 3  
Projection Type: Cylindrical  
Enlargement Factor: 1.5  
Horizontal FOV: 56.5°

FL, Max Aperture: 50mm, 1.75  
Tripod Height: 1.5m  
Viewpoint Ground Height: 56.4m AOD  
Viewpoint Grid Reference: 566540E, 171019N

Distance to Order Limits: 0m  
View Direction (Centre of View): ESE  
GPS Accuracy: 5m



**LOWER THAMES CROSSING**  
5th Floor Beaufort House  
15 St Botolph Street  
London EC3A 7DT

Project: LOWER THAMES CROSSING  
Drawing title: Figure 7.19  
Photomontage - Viewpoint S-28  
Summer Year 15  
Sheet 3 of 4

Drawn	BB	Date - 05/08/2022	Status	Revision
Checked	HP	Date - 05/08/2022	S8	P01
Approved	SK	Date - 05/08/2022	Application Document No. TR010032/APP/6.2	
Drawing number				
HE540039-CJV-ELS-SZP_ZZ000000_Z-DR-LV-00313				



P01	S8	05/08/2022	First Issued	BB	HP	SK
Rev	Status	Rev. Date	Purpose of revision	Drawn	Chck'd	Apprv'd

For location see Figure 7.16 - Visual Effects Drawing with Representative Viewpoint and Photomontage Locations		<b>Summer Viewpoint:</b>	S-28				
		Date and Time:	29/05/2019 09:11				
Camera:	Canon EOS 6D MkII	Visualisation Type:	Type 3	FL, Max Aperture:	50mm, 1.75	Distance to Order Limits:	0m
Lens:	Canon EF 50mm f/1.8 STM	Projection Type:	Cylindrical	Tripod Height:	1.5m	View Direction	(Centre of View): ESE
Equipment:	Manfrotto MA 454 Micro Positioning Plate	Enlargement Factor:	1.5	Viewpoint Ground Height:	56.4m AOD	GPS Accuracy:	5m
	Manfrotto SBH-100 Ball Head	Horizontal FOV:	56.5°	Viewpoint Grid Reference:	566540E, 171019N		



**LOWER THAMES CROSSING**  
 5th Floor Beaufort House  
 15 St Botolph Street  
 London EC3A 7DT

Project	LOWER THAMES CROSSING
Drawing title	Figure 7.19 Baseline Photography - Viewpoint S-28 Summer Year 15 Sheet 4 of 4

Drawn	BB	Date - 05/08/2022	Status	Revision
Checked	HP	Date - 05/08/2022	S8	P01
Approved	SK	Date - 05/08/2022	Application Document No. TR010032/APP/6.2	
Drawing number		HE540039-CJV-ELS-SZP_ZZ000000_Z-DR-LV-00314A		



P01	S8	05/08/2022	First Issued	BB	HP	SK
Rev	Status	Rev. Date	Purpose of revision	Drawn	Chck'd	Apprv'd

For location see Figure 7.16 - Visual Effects Drawing with Representative Viewpoint and Photomontage Locations		<b>Summer Viewpoint:</b> Date and Time: S-28 29/05/2019 09:11	Camera: Canon EOS 6D MkII Lens: Canon EF 50mm f/1.8 STM Equipment: Manfrotto MA 454 Micro Positioning Plate Manfrotto SBH-100 Ball Head	Visualisation Type: Type 3 Projection Type: Cylindrical Enlargement Factor: 1.5 Horizontal FOV: 56.5°	FL, Max Aperture: 50mm, 1.75 Tripod Height: 1.5m Viewpoint Ground Height: 56.4m AOD Viewpoint Grid Reference: 566540E, 171019N	Distance to Order Limits: 0m View Direction (Centre of View): ESE GPS Accuracy: 5m
--	--	---	--	--	---	--



**LOWER THAMES CROSSING**  
 5th Floor Beaufort House  
 15 St Botolph Street  
 London EC3A 7DT

Project	LOWER THAMES CROSSING
Drawing title	Figure 7.19 Photomontage - Viewpoint S-28 Summer Year 15 Sheet 4 of 4

Drawn	BB	Date - 05/08/2022	Status	Revision
Checked	HP	Date - 05/08/2022	S8	P01
Approved	SK	Date - 05/08/2022	Application Document No. TR010032/APP/6.2	
Drawing number		HE540039-CJV-ELS-SZP_ZZ000000_Z-DR-LV-00314		



Rev	Status	Rev. Date	Purpose of revision	Drawn	Chck'd	Apprv'd
P01	S8	05/08/2022	First Issued	BB	HP	SK

For location see Figure 7.16 - Visual Effects Drawing with Representative Viewpoint and Photomontage Locations

Camera: Canon EOS 6D MkII  
 Lens: Canon EF 50mm f/1.8 STM  
 Equipment: Manfrotto MA 454 Micro Positioning Plate  
 Manfrotto SBH-100 Ball Head

**Winter Viewpoint:**  
 Date and Time: S-30  
 06/03/2019 13:43

Visualisation Type: Type 3  
 Projection Type: Cylindrical  
 Enlargement Factor: 1.5  
 Horizontal FOV: 56.5°

FL, Max Aperture: 50mm, 1.75  
 Tripod Height: 1.5m  
 Viewpoint Ground Height: 86.4m AOD  
 Viewpoint Grid Reference: 567153E, 171270N

Distance to Order Limits: 0m  
 View Direction (Centre of View): SSE  
 GPS Accuracy: 5m



**Client**  
**LOWER THAMES CROSSING**  
 5th Floor Beaufort House  
 15 St Botolph Street  
 London EC3A 7DT

**Project**  
 LOWER THAMES CROSSING

**Drawing title**  
 Figure 7.19  
 Baseline Photography - Viewpoint S-30  
 Winter Year 1  
 Sheet 1 of 2

Drawn	BB	Date - 05/08/2022	Status	Revision
Checked	HP	Date - 05/08/2022	S8	P01
Approved	SK	Date - 05/08/2022	Application Document No. TR010032/APP/6.2	
Drawing number <b>HE540039-CJV-ELS-SZP_ZZ000000_Z-DR-LV-00315A</b>				



Rev	Status	Rev. Date	Purpose of revision	Drawn	Chck'd	Appr'd
P01	S8	05/08/2022	First Issued	BB	HP	SK

For location see Figure 7.16 - Visual Effects Drawing with Representative Viewpoint and Photomontage Locations

Camera: Canon EOS 6D MkII  
 Lens: Canon EF 50mm f/1.8 STM  
 Equipment: Manfrotto MA 454 Micro Positioning Plate  
 Manfrotto SBH-100 Ball Head

**Winter Viewpoint:**  
 Date and Time: S-30  
 06/03/2019 13:43

Visualisation Type: Type 3  
 Projection Type: Cylindrical  
 Enlargement Factor: 1.5  
 Horizontal FOV: 56.5°

FL, Max Aperture: 50mm, 1.75  
 Tripod Height: 1.5m  
 Viewpoint Ground Height: 66.4m AOD  
 Viewpoint Grid Reference: 567153E, 171270N

Distance to Order Limits: 0m  
 View Direction (Centre of View): SSE  
 GPS Accuracy: 5m



**Client**  
**LOWER THAMES CROSSING**  
 5th Floor Beaufort House  
 15 St Botolph Street  
 London EC3A 7DT

**Project**  
 LOWER THAMES CROSSING

**Drawing title**  
 Figure 7.19  
 Photomontage - Viewpoint S-30  
 Winter Year 1  
 Sheet 1 of 2

Drawn	BB	Date - 05/08/2022	Status	Revision
Checked	HP	Date - 05/08/2022	S8	P01
Approved	SK	Date - 05/08/2022	Application Document No. TR010032/APP/6.2	
Drawing number HE540039-CJV-ELS-SZP_ZZ000000_Z-DR-LV-00315				



P01	S8	05/08/2022	First Issued	BB	HP	SK
Rev	Status	Rev. Date	Purpose of revision	Drawn	Chck'd	Apprv'd

For location see Figure 7.16 - Visual Effects Drawing with Representative Viewpoint and Photomontage Locations		<b>Summer Viewpoint:</b> Date and Time:	S-30 30/05/2019 11:25	<b>Visualisation Type:</b> Projection Type: Enlargement Factor: Horizontal FOV:	Type 3 Cylindrical 1.5 56.5°	<b>FL, Max Aperture:</b> Tripod Height: Viewpoint Ground Height: Viewpoint Grid Reference:	50mm, 1.75 1.5m 66.4m AOD 567153E, 171270N	<b>Distance to Order Limits:</b> View Direction (Centre of View): GPS Accuracy:	0m SSE 5m
--	--	--	--------------------------	--	---------------------------------------	---	---	--	-----------------



**LOWER THAMES CROSSING**  
5th Floor Beaufort House  
15 St Botolph Street  
London EC3A 7DT

<b>Project</b>	LOWER THAMES CROSSING
<b>Drawing title</b>	Figure 7.19 Baseline Photography - Viewpoint S-30 Summer Year 15 Sheet 2 of 2

Drawn	BB	Date - 05/08/2022	Status	Revision
Checked	HP	Date - 05/08/2022	S8	P01
Approved	SK	Date - 05/08/2022	Application Document No. TR010032/APP/6.2	
Drawing number		HE540039-CJV-ELS-SZP_ZZ000000_Z-DR-LV-00316A		



Rev	Status	Rev. Date	Purpose of revision	Drawn	Chck'd	Apprv'd
P01	S8	05/08/2022	First Issued	BB	HP	SK

For location see Figure 7.16 - Visual Effects Drawing with Representative Viewpoint and Photomontage Locations

Camera: Canon EOS 6D MkII  
 Lens: Canon EF 50mm f/1.8 STM  
 Equipment: Manfrotto MA 454 Micro Positioning Plate  
 Manfrotto SBH-100 Ball Head

**Summer Viewpoint:**  
 Date and Time: S-30  
 30/05/2019 11:25

Visualisation Type: Type 3  
 Projection Type: Cylindrical  
 Enlargement Factor: 1.5  
 Horizontal FOV: 56.5°

FL, Max Aperture: 50mm, 1.75  
 Tripod Height: 1.5m  
 Viewpoint Ground Height: 66.4m AOD  
 Viewpoint Grid Reference: 567153E, 171270N

Distance to Order Limits: 0m  
 View Direction (Centre of View): SSE  
 GPS Accuracy: 5m



**LOWER THAMES CROSSING**  
 5th Floor Beaufort House  
 15 St Botolph Street  
 London EC3A 7DT

Project: LOWER THAMES CROSSING  
 Drawing title: Figure 7.19  
 Photomontage - Viewpoint S-30  
 Summer Year 15  
 Sheet 2 of 2

Drawn	BB	Date - 05/08/2022	Status	Revision
Checked	HP	Date - 05/08/2022	S8	P01
Approved	SK	Date - 05/08/2022	Application Document No. TR010032/APP/6.2	
Drawing number			HE540039-CJV-ELS-SZP_ZZ000000_Z-DR-LV-00316	



P01	S8	05/08/2022	First Issued	BB	HP	SK
Rev	Status	Rev. Date	Purpose of revision	Drawn	Chck'd	Apprv'd

For location see Figure 7.16 - Visual Effects Drawing with Representative Viewpoint and Photomontage Locations		<b>Winter Viewpoint:</b>	S-31				
		Date and Time:	04/03/2019 17:20				
Camera:	Canon EOS 6D MkII	Visualisation Type:	Type 3	FL, Max Aperture:	50mm, 1.75	Distance to Order Limits:	0m
Lens:	Canon EF 50mm f/1.8 STM	Projection Type:	Cylindrical	Tripod Height:	1.5m	View Direction	(Centre of View): ENE
Equipment:	Manfrotto MA 454 Micro Positioning Plate	Enlargement Factor:	1.5	Viewpoint Ground Height:	65.6m AOD	GPS Accuracy:	5m
	Manfrotto SBH-100 Ball Head	Horizontal FOV:	56.5°	Viewpoint Grid Reference:	567201E, 171313N		

Client



**LOWER THAMES CROSSING**  
 5th Floor Beaufort House  
 15 St Botolph Street  
 London EC3A 7DT

Project LOWER THAMES CROSSING  
 Drawing title Figure 7.19  
 Baseline Photography - Viewpoint S-31  
 Winter Year 1  
 Sheet 1 of 2

Drawn	BB	Date - 05/08/2022	Status	S8	Revision	P01
Checked	HP	Date - 05/08/2022				
Approved	SK	Date - 05/08/2022	Application Document No. TR010032/APP/6.2			
Drawing number		HE540039-CJV-ELS-SZP_ZZ000000_Z-DR-LV-00317A				





P01	S8	05/08/2022	First Issued	BB	HP	SK
Rev	Status	Rev. Date	Purpose of revision	Drawn	Chck'd	Apprv'd

For location see Figure 7.16 - Visual Effects Drawing with Representative Viewpoint and Photomontage Locations		<b>Winter Viewpoint:</b>	S-31				
		Date and Time:	04/03/2019 17:20				
Camera:	Canon EOS 6D MkII	Visualisation Type:	Type 3	FL, Max Aperture:	50mm, 1.75	Distance to Order Limits:	0m
Lens:	Canon EF 50mm f/1.8 STM	Projection Type:	Cylindrical	Tripod Height:	1.5m	View Direction	(Centre of View): ENE
Equipment:	Manfrotto MA 454 Micro Positioning Plate	Enlargement Factor:	1.5	Viewpoint Ground Height:	65.6m AOD	GPS Accuracy:	5m
	Manfrotto SBH-100 Ball Head	Horizontal FOV:	56.5°	Viewpoint Grid Reference:	567201E, 171313N		



**LOWER THAMES CROSSING**  
 5th Floor Beaufort House  
 15 St Botolph Street  
 London EC3A 7DT

Project	LOWER THAMES CROSSING
Drawing title	Figure 7.19 Photomontage - Viewpoint S-31 Winter Year 1 Sheet 1 of 2

Drawn	BB	Date - 05/08/2022	Status	Revision
Checked	HP	Date - 05/08/2022	S8	P01
Approved	SK	Date - 05/08/2022	Application Document No. TR010032/APP/6.2	
Drawing number		HE540039-CJV-ELS-SZP_ZZ000000_Z-DR-LV-00317		



P01	S8	05/08/2022	First Issued	BB	HP	SK
Rev	Status	Rev. Date	Purpose of revision	Drawn	Chck'd	Apprv'd

For location see Figure 7.16 - Visual Effects Drawing with Representative Viewpoint and Photomontage Locations		<b>Summer Viewpoint:</b>	S-31				
		Date and Time:	30/05/2019 11:28				
Camera:	Canon EOS 6D MkII	Visualisation Type:	Type 3	FL, Max Aperture:	50mm, 1.75	Distance to Order Limits:	0m
Lens:	Canon EF 50mm f/1.8 STM	Projection Type:	Cylindrical	Tripod Height:	1.5m	View Direction	(Centre of View): ENE
Equipment:	Manfrotto MA 454 Micro Positioning Plate	Enlargement Factor:	1.5	Viewpoint Ground Height:	65.6m AOD	GPS Accuracy:	5m
	Manfrotto SBH-100 Ball Head	Horizontal FOV:	56.5°	Viewpoint Grid Reference:	567201E, 171313N		



**LOWER THAMES CROSSING**  
 5th Floor Beaufort House  
 15 St Botolph Street  
 London EC3A 7DT

Project	LOWER THAMES CROSSING
Drawing title	Figure 7.19 Baseline Photography - Viewpoint S-31 Summer Year 15 Sheet 2 of 2

Drawn	BB	Date	- 05/08/2022	Status	S8	Revision	P01
Checked	HP	Date	- 05/08/2022				
Approved	SK	Date	- 05/08/2022				
Drawing number				HE540039-CJV-ELS-SZP_ZZ000000_Z-DR-LV-00318A			
				Application Document No. TR010032/APP/6.2			



Rev	Status	Rev. Date	Purpose of revision	Drawn	Chck'd	Apprv'd
P01	S8	05/08/2022	First Issued	BB	HP	SK

For location see Figure 7.16 - Visual Effects Drawing with Representative Viewpoint and Photomontage Locations <b>Summer Viewpoint:</b> S-31 Date and Time: 30/05/2019 11:28		Visualisation Type: Type 3 Projection Type: Cylindrical Enlargement Factor: 1.5 Horizontal FOV: 56.5°	FL, Max Aperture: 50mm, 1.75 Tripod Height: 1.5m Viewpoint Ground Height: 65.6m AOD Viewpoint Grid Reference: 567201E, 171313N	Distance to Order Limits: 0m View Direction (Centre of View): ENE GPS Accuracy: 5m
--	--	--	---	--



**LOWER THAMES CROSSING**  
 5th Floor Beaufort House  
 15 St Botolph Street  
 London EC3A 7DT

Project	LOWER THAMES CROSSING
Drawing title	Figure 7.19 Photomontage - Viewpoint S-31 Summer Year 15 Sheet 2 of 2

Drawn	BB	Date - 05/08/2022	Status	S8	Revision	P01
Checked	HP	Date - 05/08/2022	Application Document No. TR010032/APP/6.2			
Approved	SK	Date - 05/08/2022	Drawing number			
HE540039-CJV-ELS-SZP_ZZ000000_Z-DR-LV-00318						



P01	S8	05/08/2022	First Issued	BB	HP	SK
Rev	Status	Rev. Date	Purpose of revision	Drawn	Chck'd	Apprv'd

For location see Figure 7.16 - Visual Effects Drawing with Representative Viewpoint and Photomontage Locations

Camera: Canon EOS 6D MkII  
 Lens: Canon EF 50mm f/1.8 STM  
 Equipment: Manfrotto MA 454 Micro Positioning Plate  
 Manfrotto SBH-100 Ball Head

Visualisation Type: Type 3  
 Projection Type: Cylindrical  
 Enlargement Factor: 1.5  
 Horizontal FOV: 56.5°

Winter Viewpoint:  
 Date and Time: S-33  
 14/04/2022 09:06

FL, Max Aperture: 50mm, 1.75  
 Tripod Height: 1.5m  
 Viewpoint Ground Height: 48.4m AOD  
 Viewpoint Grid Reference: 568011E, 172014N

Distance to Order Limits: 0m  
 View Direction (Centre of View): NW  
 GPS Accuracy: 5m



Client  
**LOWER THAMES CROSSING**  
 5th Floor Beaufort House  
 15 St Botolph Street  
 London EC3A 7DT

Project LOWER THAMES CROSSING  
 Drawing title Figure 7.19  
 Baseline Photography - Viewpoint S-33  
 Winter Year 1  
 Sheet 1 of 4

Drawn	BB	Date - 05/08/2022	Status	Revision
Checked	HP	Date - 05/08/2022	S8	P01
Approved	SK	Date - 05/08/2022	Application Document No. TR010032/APP/6.2	
Drawing number		HE540039-CJV-ELS-SZP_ZZ000000_Z-DR-LV-00319A		



For location see Figure 7.16 - Visual Effects Drawing with Representative Viewpoint and Photomontage Locations

**Winter Viewpoint:** S-33  
Date and Time: 14/04/2022 09:06

Camera: Canon EOS 6D MkII  
Lens: Canon EF 50mm f/1.8 STM  
Equipment: Manfrotto MA 454 Micro Positioning Plate  
Manfrotto SBH-100 Ball Head

Visualisation Type: Type 3  
Projection Type: Cylindrical  
Enlargement Factor: 1.5  
Horizontal FOV: 56.5°

FL, Max Aperture: 50mm, 1.75  
Tripod Height: 1.5m  
Viewpoint Ground Height: 48.4m AOD  
Viewpoint Grid Reference: 568011E, 172014N

Distance to Order Limits: 0m  
View Direction (Centre of View): NW  
GPS Accuracy: 5m



**LOWER THAMES CROSSING**  
5th Floor Beaufort House  
15 St Botolph Street  
London EC3A 7DT

Project: LOWER THAMES CROSSING  
Drawing title: Figure 7.19  
Photomontage - Viewpoint S-33  
Winter Year 1  
Sheet 1 of 4

Drawn	BB	Date - 05/08/2022	Status	Revision
Checked	HP	Date - 05/08/2022	S8	P01
Approved	SK	Date - 05/08/2022	Application Document No. TR010032/APP/6.2	
Drawing number HE540039-CJV-ELS-SZP_ZZ000000_Z-DR-LV-00319				

Rev	Status	Rev. Date	Purpose of revision	Drawn	Chck'd	Apprv'd
P01	S8	05/08/2022	First Issued	BB	HP	SK



Rev	Status	Rev. Date	Purpose of revision	Drawn	Chck'd	Apprv'd
P01	S8	05/08/2022	First Issued	BB	HP	SK

For location see Figure 7.16 - Visual Effects Drawing with Representative Viewpoint and Photomontage Locations		<b>Winter Viewpoint:</b> Date and Time:	S-33 14/04/2022 09:06	Visualisation Type:	Type 3	FL, Max Aperture:	50mm, 1.75	Distance to Order Limits:	0m
Camera:	Canon EOS 6D MkII	Projection Type:	Cylindrical	Tripod Height:	1.5m	View Direction	NW	View Direction	(Centre of View):
Lens:	Canon EF 50mm f/1.8 STM	Enlargement Factor:	1.5	Viewpoint Ground Height:	48.4m AOD	GPS Accuracy:	5m	Viewpoint Grid Reference:	568011E, 172014N
Equipment:	Manfrotto MA 454 Micro Positioning Plate Manfrotto SBH-100 Ball Head	Horizontal FOV:	56.5°						

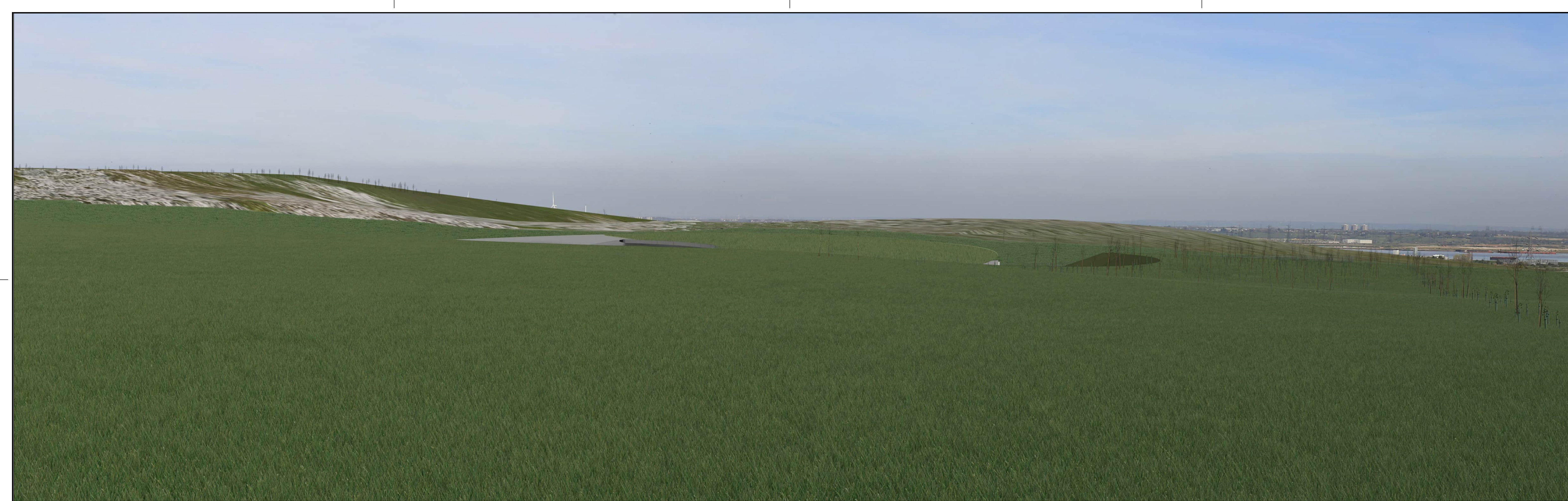
Client



**LOWER THAMES CROSSING**  
5th Floor Beaufort House  
15 St Botolph Street  
London EC3A 7DT

Project	LOWER THAMES CROSSING
Drawing title	Figure 7.19 Baseline Photography - Viewpoint S-33 Winter Year 1 Sheet 2 of 4

Drawn	BB	Date - 05/08/2022	Status	S8	Revision	P01
Checked	HP	Date - 05/08/2022	Application Document No.	TR010032/APP/6.2		
Approved	SK	Date - 05/08/2022	Drawing number	HE540039-CJV-ELS-SZP_ZZ000000_Z-DR-LV-00320A		



Rev	Status	Rev. Date	Purpose of revision	Drawn	Chck'd	Apprv'd
P01	S8	05/08/2022	First Issued	BB	HP	SK

For location see Figure 7.16 - Visual Effects Drawing with Representative Viewpoint and Photomontage Locations

Camera: Canon EOS 6D MkII  
 Lens: Canon EF 50mm f/1.8 STM  
 Equipment: Manfrotto MA 454 Micro Positioning Plate  
 Manfrotto SBH-100 Ball Head

**Winter Viewpoint:**  
 Date and Time: S-33  
 14/04/2022 09:06

Visualisation Type: Type 3  
 Projection Type: Cylindrical  
 Enlargement Factor: 1.5  
 Horizontal FOV: 56.5°

FL, Max Aperture: 50mm, 1.75  
 Tripod Height: 1.5m  
 Viewpoint Ground Height: 48.4m AOD  
 Viewpoint Grid Reference: 568011E, 172014N

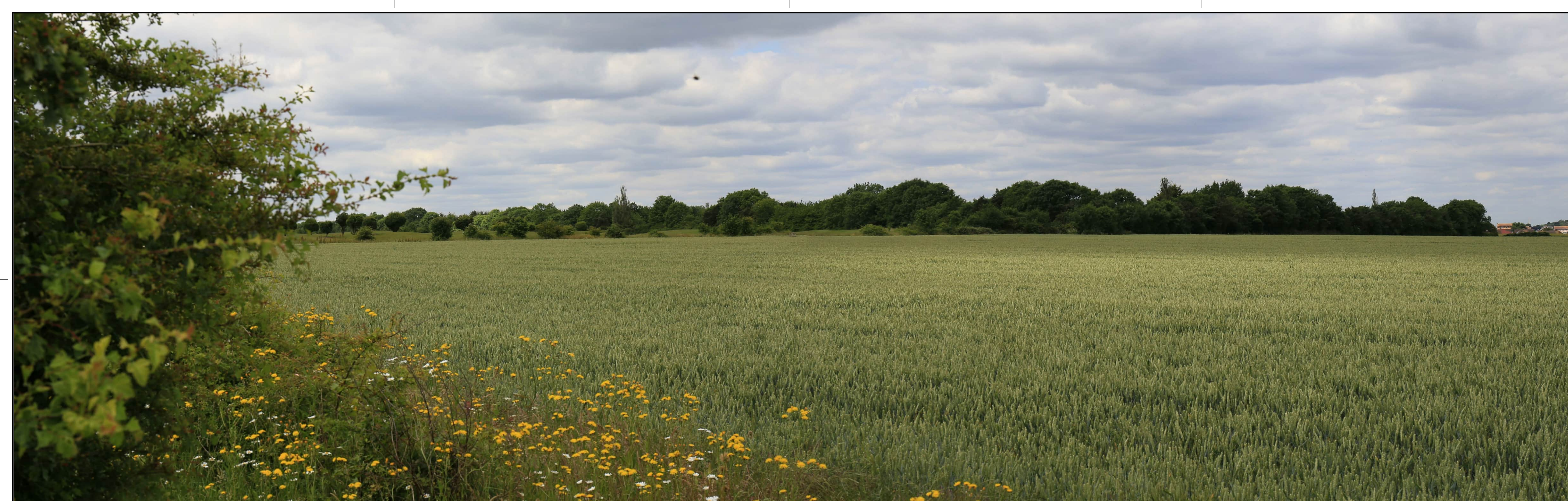
Distance to Order Limits: 0m  
 View Direction (Centre of View): NW  
 GPS Accuracy: 5m



**LOWER THAMES CROSSING**  
 5th Floor Beaufort House  
 15 St Botolph Street  
 London EC3A 7DT

Project: LOWER THAMES CROSSING  
 Drawing title: Figure 7.19  
 Photomontage - Viewpoint S-33  
 Winter Year 1  
 Sheet 2 of 4

Drawn	BB	Date - 05/08/2022	Status	Revision
Checked	HP	Date - 05/08/2022	S8	P01
Approved	SK	Date - 05/08/2022	Application Document No. TR010032/APP/6.2	
Drawing number HE540039-CJV-ELS-SZP_ZZ000000_Z-DR-LV-00320				



Rev	Status	Rev. Date	Purpose of revision	Drawn	Chck'd	Apprv'd
P01	S8	05/08/2022	First Issued	BB	HP	SK

For location see Figure 7.16 - Visual Effects Drawing with Representative Viewpoint and Photomontage Locations

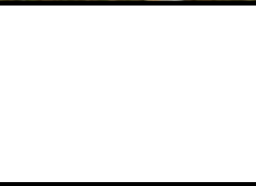
Camera: Canon EOS 6D MkII  
 Lens: Canon EF 50mm f/1.8 STM  
 Equipment: Manfrotto MA 454 Micro Positioning Plate  
 Manfrotto SBH-100 Ball Head

Visualisation Type: Type 3  
 Projection Type: Cylindrical  
 Enlargement Factor: 1.5  
 Horizontal FOV: 56.5°

Summer Viewpoint: S-33  
 Date and Time: 13/06/2022 10:43

FL, Max Aperture: 50mm, 1.75  
 Tripod Height: 1.5m  
 Viewpoint Ground Height: 48.4m AOD  
 Viewpoint Grid Reference: 568011E, 172014N

Distance to Order Limits: 0m  
 View Direction (Centre of View): NW  
 GPS Accuracy: 5m



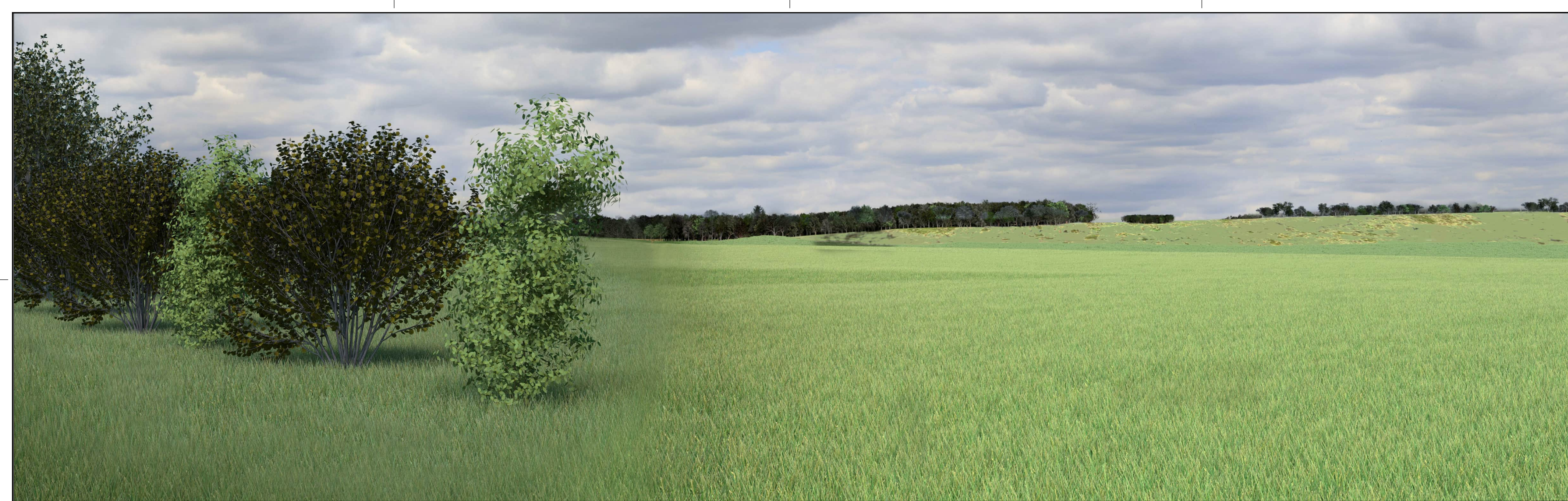
Client  
**national highways**

**LOWER THAMES CROSSING**  
 5th Floor Beaufort House  
 15 St Botolph Street  
 London EC3A 7DT

Project LOWER THAMES CROSSING  
 Drawing title Figure 7.19  
 Baseline Photography - Viewpoint S-33  
 Summer Year 15  
 Sheet 3 of 4

Drawn	BB	Date - 05/08/2022	Status	S8	Revision	P01
Checked	HP	Date - 05/08/2022	Application Document No.	TR010032/APP/6.2		
Approved	SK	Date - 05/08/2022	Drawing number	HE540039-CJV-ELS-SZP_ZZ000000_Z-DR-LV-00321A		





P01	S8	05/08/2022	First Issued	BB	HP	SK
Rev	Status	Rev. Date	Purpose of revision	Drawn	Chck'd	Apprv'd

For location see Figure 7.16 - Visual Effects Drawing with Representative Viewpoint and Photomontage Locations

Camera: Canon EOS 6D MkII  
 Lens: Canon EF 50mm f/1.8 STM  
 Equipment: Manfrotto MA 454 Micro Positioning Plate  
 Manfrotto SBH-100 Ball Head

**Summer Viewpoint:** S-33  
 Date and Time: 13/06/2022 10:43

Visualisation Type: Type 3  
 Projection Type: Cylindrical  
 Enlargement Factor: 1.5  
 Horizontal FOV: 56.5°

FL, Max Aperture: 50mm, 1.75  
 Tripod Height: 1.5m  
 Viewpoint Ground Height: 48.4m AOD  
 Viewpoint Grid Reference: 568011E, 172014N

Distance to Order Limits: 0m  
 View Direction (Centre of View): NW  
 GPS Accuracy: 5m



**Client**

**LOWER THAMES CROSSING**  
 5th Floor Beaufort House  
 15 St Botolph Street  
 London EC3A 7DT

**Project**

LOWER THAMES CROSSING

**Drawing title**

Figure 7.19  
 Photomontage - Viewpoint S-33  
 Summer Year 15  
 Sheet 3 of 4

Drawn	BB	Date - 05/08/2022	Status	Revision
Checked	HP	Date - 05/08/2022	S8	P01
Approved	SK	Date - 05/08/2022	Application Document No. TR010032/APP/6.2	
Drawing number		HE540039-CJV-ELS-SZP_ZZ000000_Z-DR-LV-00321		



P01	S8	05/08/2022	First Issued	BB	HP	SK
Rev	Status	Rev. Date	Purpose of revision	Drawn	Chck'd	Apprv'd

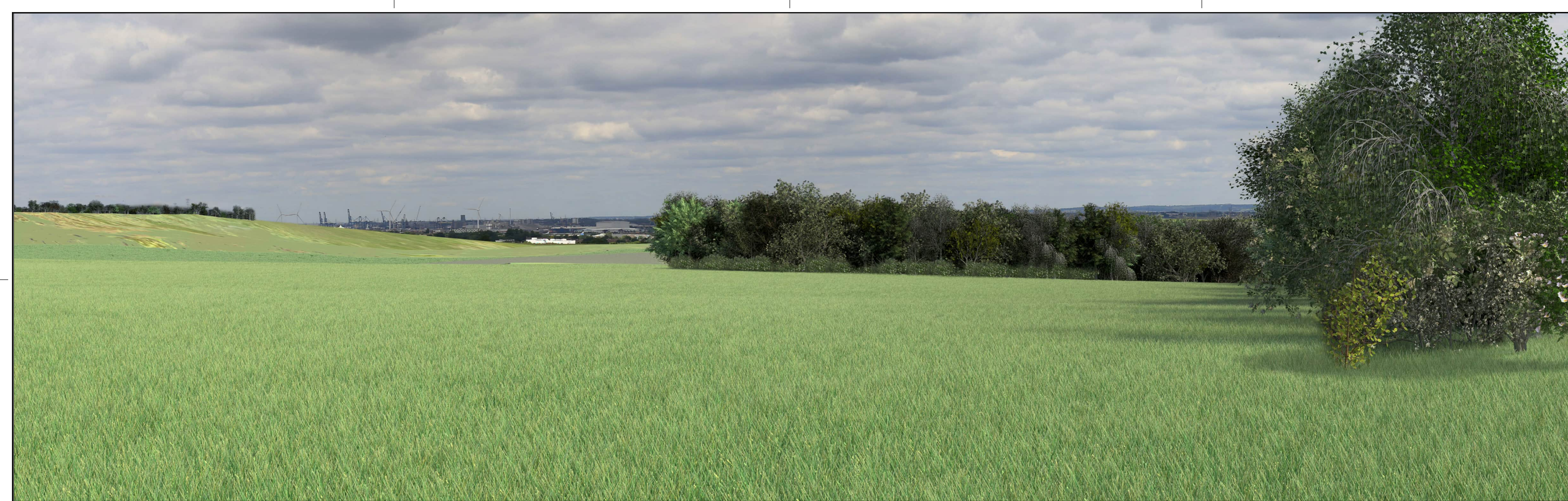
For location see Figure 7.16 - Visual Effects Drawing with Representative Viewpoint and Photomontage Locations		<b>Summer Viewpoint:</b>	S-33				
		Date and Time:	13/06/2022 10:43				
Camera:	Canon EOS 6D MkII	Visualisation Type:	Type 3	FL, Max Aperture:	50mm, 1.75	Distance to Order Limits:	0m
Lens:	Canon EF 50mm f/1.8 STM	Projection Type:	Cylindrical	Tripod Height:	1.5m	View Direction	NW
Equipment:	Manfrotto MA 454 Micro Positioning Plate	Enlargement Factor:	1.5	Viewpoint Ground Height:	48.4m AOD	(Centre of View):	NW
	Manfrotto SBH-100 Ball Head	Horizontal FOV:	56.5°	Viewpoint Grid Reference:	568011E, 172014N	GPS Accuracy:	5m

Client

**LOWER THAMES CROSSING**  
 5th Floor Beaufort House  
 15 St Botolph Street  
 London EC3A 7DT

Project	LOWER THAMES CROSSING
Drawing title	Figure 7.19 Baseline Photography - Viewpoint S-33 Summer Year 15 Sheet 4 of 4

Drawn	BB	Date - 05/08/2022	Status	S8	Revision	P01
Checked	HP	Date - 05/08/2022				
Approved	SK	Date - 05/08/2022	Application Document No. TR010032/APP/6.2			
Drawing number		HE540039-CJV-ELS-SZP_ZZ000000_Z-DR-LV-00322A				



P01	S8	05/08/2022	First Issued	BB	HP	SK
Rev	Status	Rev. Date	Purpose of revision	Drawn	Chck'd	Apprv'd

For location see Figure 7.16 - Visual Effects Drawing with Representative Viewpoint and Photomontage Locations		<b>Summer Viewpoint:</b> S-33		Date and Time: 13/06/2022 10:43	
Camera:	Canon EOS 6D MkII	Visualisation Type:	Type 3	FL, Max Aperture:	50mm, 1.75
Lens:	Canon EF 50mm f/1.8 STM	Projection Type:	Cylindrical	Tripod Height:	1.5m
Equipment:	Manfrotto MA 454 Micro Positioning Plate	Enlargement Factor:	1.5	Viewpoint Ground Height:	48.4m AOD
	Manfrotto SBH-100 Ball Head	Horizontal FOV:	56.5°	Viewpoint Grid Reference:	568011E, 172014N
				Distance to Order Limits:	0m
				View Direction (Centre of View):	NW
				GPS Accuracy:	5m



**LOWER THAMES CROSSING**  
 5th Floor Beaufort House  
 15 St Botolph Street  
 London EC3A 7DT

Project	LOWER THAMES CROSSING
Drawing title	Figure 7.19 Photomontage - Viewpoint S-33 Summer Year 15 Sheet 4 of 4

Drawn	BB	Date - 05/08/2022	Status	S8	Revision	P01
Checked	HP	Date - 05/08/2022	Application Document No. TR010032/APP/6.2			
Approved	SK	Date - 05/08/2022	Drawing number			
HE540039-CJV-ELS-SZP_ZZ000000_Z-DR-LV-00322						



Rev	Status	Rev. Date	Purpose of revision	Drawn	Chck'd	Apprv'd
P01	S8	05/08/2022	First Issued	BB	HP	SK

For location see Figure 7.16 - Visual Effects Drawing with Representative Viewpoint and Photomontage Locations

<b>Winter Viewpoint:</b> Date and Time:	S-38b 05/04/2022 14:19	<b>Visualisation Type:</b> Projection Type: Enlargement Factor: Horizontal FOV:	Type 3 Cylindrical 1.5	<b>FL, Max Aperture:</b> Tripod Height: Viewpoint Ground Height: Viewpoint Grid Reference:	50mm, 1.75 1.5m 2.5m AOD 569153E, 174803N	<b>Distance to Order Limits:</b> View Direction (Centre of View): GPS Accuracy:	1210m SW 5m
--	---------------------------	--	------------------------------	---	--	--	-------------------

Client



**LOWER THAMES CROSSING**  
5th Floor Beaufort House  
15 St Botolph Street  
London EC3A 7DT

<b>Project</b>	LOWER THAMES CROSSING
<b>Drawing title</b>	Figure 7.19 Baseline Photography - Viewpoint S-38b Winter Year 1 Sheet 1 of 2

Drawn	BB	Date - 05/08/2022	Status	S8	Revision	P01
Checked	HP	Date - 05/08/2022	Application Document No. TR010032/APP/6.2			
Approved	SK	Date - 05/08/2022	Drawing number			
HE540039-CJV-ELS-SZP_ZZ000000_Z-DR-LV-00323A						



P01	S8	05/08/2022	First Issued	BB	HP	SK
Rev	Status	Rev. Date	Purpose of revision	Drawn	Chck'd	Apprv'd

For location see Figure 7.16 - Visual Effects Drawing with Representative Viewpoint and Photomontage Locations

Camera: Canon EOS 6D MkII  
 Lens: Canon EF 50mm f/1.8 STM  
 Equipment: Manfrotto MA 454 Micro Positioning Plate  
 Manfrotto SBH-100 Ball Head

**Winter Viewpoint:**  
 Date and Time: S-38b  
 05/04/2022 14:19

Visualisation Type: Type 3  
 Projection Type: Cylindrical  
 Enlargement Factor: 1.5  
 Horizontal FOV: 56.5°

FL, Max Aperture: 50mm, 1.75  
 Tripod Height: 1.5m  
 Viewpoint Ground Height: 2.5m AOD  
 Viewpoint Grid Reference: 569153E, 174803N

Distance to Order Limits: 1210m  
 View Direction (Centre of View): SW  
 GPS Accuracy: 5m



**Client**

**LOWER THAMES CROSSING**  
 5th Floor Beaufort House  
 15 St Botolph Street  
 London EC3A 7DT

**Project**

LOWER THAMES CROSSING

**Drawing title**

Figure 7.19  
 Photomontage - Viewpoint S-38b  
 Winter Year 1  
 Sheet 1 of 2

Drawn	BB	Date - 05/08/2022	Status	S8	Revision	P01
Checked	HP	Date - 05/08/2022	Application Document No. TR010032/APP/6.2			
Approved	SK	Date - 05/08/2022	Drawing number			
HE540039-CJV-ELS-SZP_ZZ000000_Z-DR-LV-00323						



P01	S8	05/08/2022	First Issued	BB	HP	SK
Rev	Status	Rev. Date	Purpose of revision	Drawn	Chck'd	Apprv'd

For location see Figure 7.16 - Visual Effects Drawing with Representative Viewpoint and Photomontage Locations		<b>Summer Viewpoint:</b>	S-38b				
		Date and Time:	28/05/2019 14:10				
Camera:	Canon EOS 6D MkII	Visualisation Type:	Type 3	FL, Max Aperture:	50mm, 1.75	Distance to Order Limits:	1210m
Lens:	Canon EF 50mm f/1.8 STM	Projection Type:	Cylindrical	Tripod Height:	1.5m	View Direction	(Centre of View): SW
Equipment:	Manfrotto MA 454 Micro Positioning Plate	Enlargement Factor:	1.5	Viewpoint Ground Height:	2.5m AOD	GPS Accuracy:	5m
	Manfrotto SBH-100 Ball Head	Horizontal FOV:	56.5°	Viewpoint Grid Reference:	569153E, 174803N		



**LOWER THAMES CROSSING**  
 5th Floor Beaufort House  
 15 St Botolph Street  
 London EC3A 7DT

Project	LOWER THAMES CROSSING
Drawing title	Figure 7.19 Baseline Photography - Viewpoint S-38b Summer Year 15 Sheet 2 of 2

Drawn	BB	Date - 05/08/2022	Status	S8	Revision	P01
Checked	HP	Date - 05/08/2022				
Approved	SK	Date - 05/08/2022	Application Document No. TR010032/APP/6.2			
Drawing number		HE540039-CJV-ELS-SZP_ZZ000000_Z-DR-LV-00324A				



P01	S8	05/08/2022	First Issued	BB	HP	SK
Rev	Status	Rev. Date	Purpose of revision	Drawn	Chck'd	Apprv'd

For location see Figure 7.16 - Visual Effects Drawing with Representative Viewpoint and Photomontage Locations		<b>Summer Viewpoint:</b>	S-38b				
		Date and Time:	28/05/2019 14:10				
Camera:	Canon EOS 6D MkII	Visualisation Type:	Type 3	FL, Max Aperture:	50mm, 1.75	Distance to Order Limits:	1210m
Lens:	Canon EF 50mm f/1.8 STM	Projection Type:	Cylindrical	Tripod Height:	1.5m	View Direction	SW
Equipment:	Manfrotto MA 454 Micro Positioning Plate	Enlargement Factor:	1.5	Viewpoint Ground Height:	2.5m AOD	(Centre of View):	SW
	Manfrotto SBH-100 Ball Head	Horizontal FOV:	56.5°	Viewpoint Grid Reference:	569153E, 174803N	GPS Accuracy:	5m



**LOWER THAMES CROSSING**  
 5th Floor Beaufort House  
 15 St Botolph Street  
 London EC3A 7DT

Project	LOWER THAMES CROSSING
Drawing title	Figure 7.19 Photomontage - Viewpoint S-38b Summer Year 15 Sheet 2 of 2

Drawn	BB	Date - 05/08/2022	Status	S8	Revision	P01
Checked	HP	Date - 05/08/2022				
Approved	SK	Date - 05/08/2022	Application Document No. TR010032/APP/6.2			
Drawing number		HE540039-CJV-ELS-SZP_ZZ000000_Z-DR-LV-00324				

If you need help accessing this or any other National Highways information, please call **0300 123 5000** and we will help you.

© Crown copyright 2022.

You may re-use this information (not including logos) free of charge in any format or medium, under the terms of the Open Government Licence. To view this licence:

visit [www.nationalarchives.gov.uk/doc/open-government-licence/](http://www.nationalarchives.gov.uk/doc/open-government-licence/)

write to the **Information Policy Team, The National Archives, Kew, London TW9 4DU**, or email [psi@nationalarchives.gsi.gov.uk](mailto:psi@nationalarchives.gsi.gov.uk).

Mapping (where present): © Crown copyright and database rights 2022 OS 100030649. You are permitted to use this data solely to enable you to respond to, or interact with, the organisation that provided you with the data. You are not permitted to copy, sub-license, distribute or sell any of this data to third parties in any form.

If you have any enquiries about this publication email [info@nationalhighways.co.uk](mailto:info@nationalhighways.co.uk) or call **0300 123 5000\***.

\*Calls to 03 numbers cost no more than a national rate call to an 01 or 02 number and must count towards any inclusive minutes in the same way as 01 and 02 calls. These rules apply to calls from any type of line including mobile, BT, other fixed line or payphone. Calls may be recorded or monitored.

Printed on paper from well-managed forests and other controlled sources when issued directly by National Highways.

Registered office Bridge House, 1 Walnut Tree Close, Guildford GU1 4LZ

National Highways Company Limited registered in England and Wales number 09346363